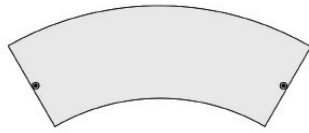


SNAP TUBE FABRIC CURVED COUNTER



PRODUCT DESCRIPTION

The Snap Tube Fabric Counter display combines convenience and show. Push button snaps connect the lightweight aluminum frame. Place the frame into the fabric piece, cover and pull both zippers toward the back to enclose unit. Attach counter top. Graphics available on front, back, sides and top. See your printed graphic through the frosted acrylic counter top piece! This fully enclosed unit unzips to make for a convenient spot to hide stuff. Carry case included.

DISPLAY DIMENSION	46" W x 38" H x 18" L
-------------------	-----------------------

GRAPHIC DIMENSIONS	82" W x 40" H
--------------------	---------------

GRAPHIC MATERIAL

Stretch Fabric

GRAPHIC FINISHING

One piece. Inside hem. Two top zippers.

DISPLAY CONSTRUCTION

Aluminum Frame	Acrylic Counter Top
----------------	---------------------

SHIPPING WEIGHTS & DIMENSIONS

Shipping Weight	31 lbs (frame only) 33 lbs (with graphic)
-----------------	--

Shipping Dimensions	49" H x 21" W x 7" D
---------------------	----------------------

LARGE QUANTITY FREIGHT

Freight Shipping	20 boxes per 49" L x 40" W x 76" H skids
------------------	--

Freight Weight	620 lbs (frame only) 660 lbs (frame & graphic)
----------------	---

AVAILABLE ACCESSORIES

Curved Shelf

TOP WEIGHT CAPACITY	75 lbs
---------------------	--------

SHELF WEIGHT CAPACITY	7 lbs
-----------------------	-------



Nylon Carry Bag



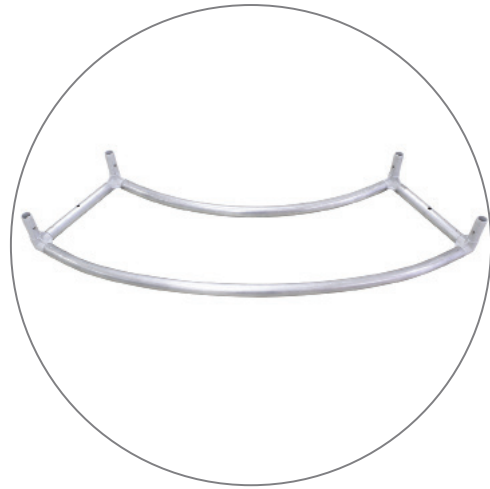
Optional Curved Shelf

SNAP TUBE FABRIC CURVED COUNTER

PARTS LIST



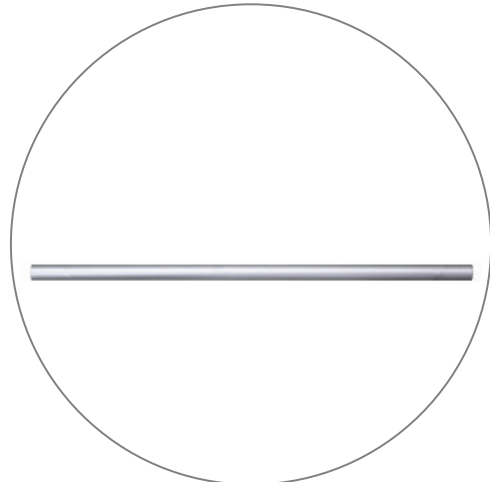
Qty 1 - Top Base
(Pre-drilled for acrylic counter)



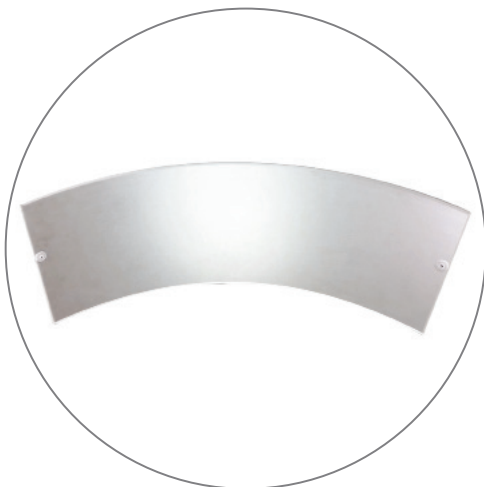
Qty 1 - Bottom Base



Qty 4 - 33" Vertical Support Bar



Qty 2 - 13.25" Horizontal Support Bar

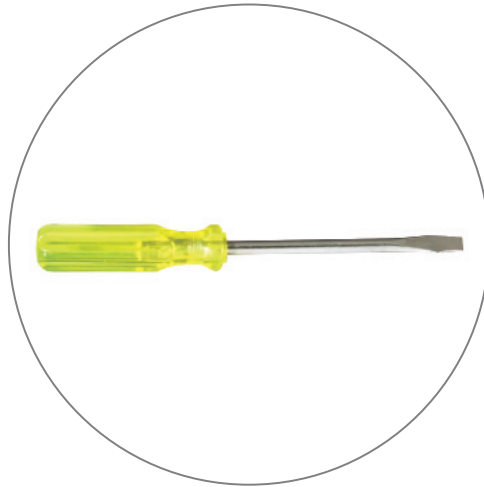


Qty 1 - Acrylic Top Counter

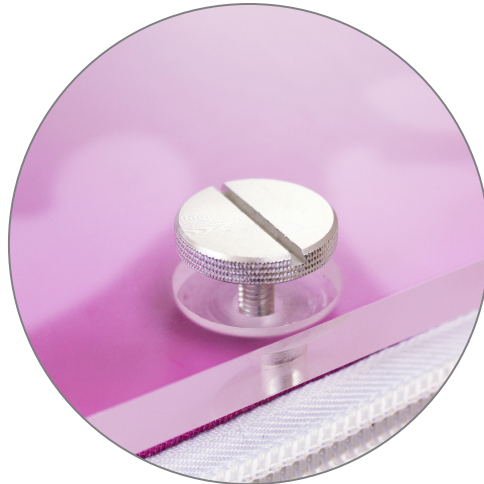


Qty 2 - Large Head Bolt

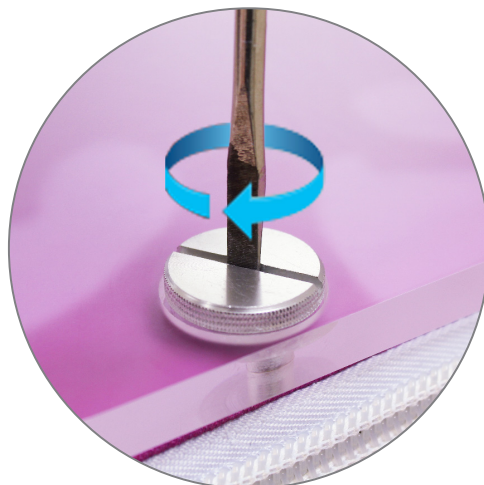
REQUIRED TOOLS



Flathead Screwdriver*



Insert head bolt.



Then screw and tighten.

SNAP TUBE FABRIC CURVED COUNTER

SET UP INSTRUCTIONS 1/2

Step 1

First, start by building both vertical sides of the EZ Fabric Counter.



Step 2

Take (2) 33" support bars and (1) 13.25" support bar and connect them as shown above. Repeat the same process for another set.



Step 3

Set out your bottom base on a flat surface. Be sure not to confuse this base with the top, which has (2) pre-drilled holes for the acrylic counter top. Locate the push-out caps on the inside of the posts.



Step 4

Push in and then hold the push-out cap on the bottom base so the support bar will slide on. Now slide each bar completely on to the bottom base. You will slide in one push-out cap at a time.



Step 5

The frame is now ready for the top base. Make sure it appears as shown above.



Step 6

Slide on the top base just as mentioned in step 4.



Step 7

Be sure that there is (1) pre-drilled hole on each side, facing up on the top base.



Step 8

The frame is now ready to be fitted with the graphic.



SNAP TUBE FABRIC CURVED COUNTER

SET UP INSTRUCTIONS 2/2

Step 9

Starting from the bottom, slide the graphic on to the frame.



Step 10

Zip up the graphic around the frame.



Step 11

Locate the pre-drilled hole on the top base. Make sure this hole aligns with the finished hole on the graphic.



Step 12

Align the acrylic counter top holes and insert the large head screws to secure the counter top to the frame.



Step 13

The install is now complete.

