

MOUNTAIN TWISTLOCK 30FT.



PRODUCT DESCRIPTION

Introducing our New 30 ft. Mountain Twistlock—with curved acrylic side panels that complement the curves of the wave tops, curvy acrylic headers, and rounded tabletops and display feet. Middle beams and extra feet on the display offers you both a 5-graphic option and an single or double LCD monitor option. (Monitor Bracket is an accessory upgrade)

As you can expect, The Mountain Twistlock V is completely toolless. Simply attach hardware connectors to frame by sliding into extrusion grooves and secure into place by twisting knobs. Tubes connect with snap buttons. And, SEG graphics are placed by hand into extrusion grooves.

DISPLAY DIMENSION	352.13" W x 96" H
GRAPHIC DIMENSIONS	82.5" W x 82.5" H (Large Graphic) 33.5" W x 82.5" H (Small Graphic)

GRAPHIC MATERIAL

Stretch Fabric

GRAPHIC FINISHING

The graphic will be printed on Satin Fabric. Silicone beading will be sewn to the edge of the graphic for graphic installation. The silicone beading will not be visible once the graphic is installed into the frame.

DISPLAY CONSTRUCTION

Aluminum Frame Construction	Back Wall Hardware
Arch Canopy Frame (2" Aluminum Tubing)	Frosted Plex Header & Wings

SHIPPING WEIGHTS & DIMENSIONS

Shipping Weight	140 lbs (frame with graphics)
	155 lbs (frame with graphics)
	155 lbs (frame with graphics)
Shipping Dimensions	3 Cases - 53" H x 20.5" W x 17" D

LARGE QUANTITY FREIGHT

Freight Shipping	6 boxes per 48" L x 40" W x 51" H skids
Freight Weight	2508 lbs (frame only) 2658 (frame with graphics)



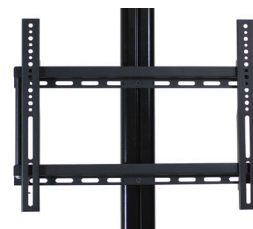
Twistlock Feature

Wheeled Case (included)

AVAILABLE ACCESSORIES

Acrylic Side Panels - Print Upgrade	Acrylic Header - Print Upgrade
T135 LED Lights	Silver Lights LED
Black Lights LED	Monitor Bracket - 22" - 42" LCD size

SHELF WEIGHT CAPACITY 30 lbs



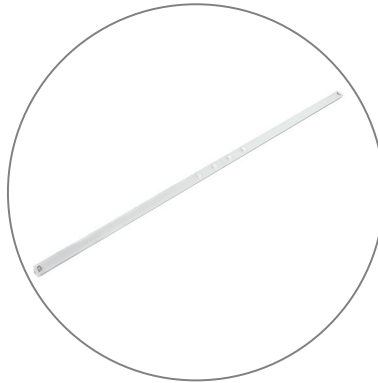
Optional TV Monitor Mount*

MOUNTAIN TWISTLOCK 30FT.

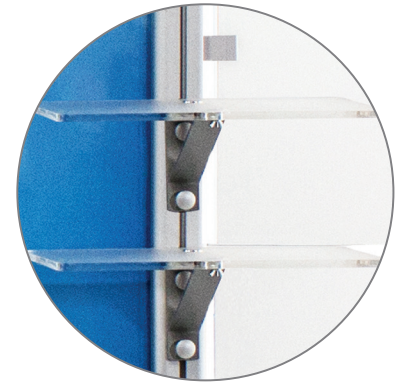
PARTS LIST



Qty 12 - Vertical Twist
Lock Extrusions



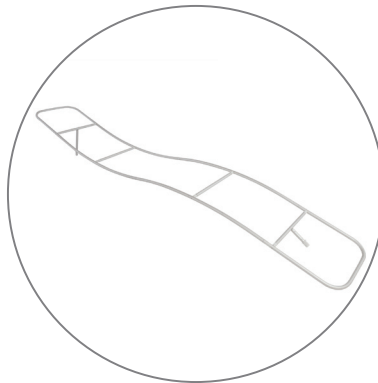
Qty 10 - Horizontal Extrusions



Qty 6 - Small Acrylic
Shelves with Brackets



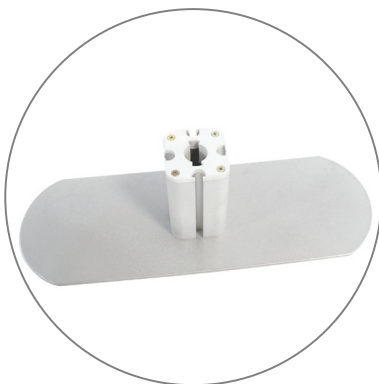
Qty 4 - Acrylic table
with Brackets



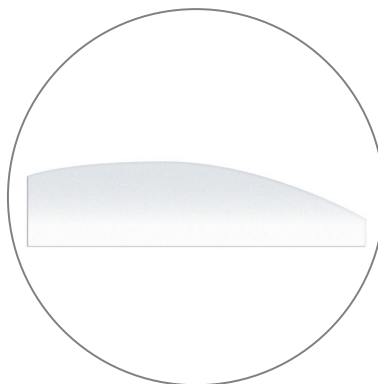
Qty 3 - Canopy Frame
(w/ Fabric Canopy)



Qty 4 - Acrylic Wings
with Brackets



Qty 6 - Feet



Qty 3 - Acrylic Header
with Brackets



Qty 3 - Hard Case